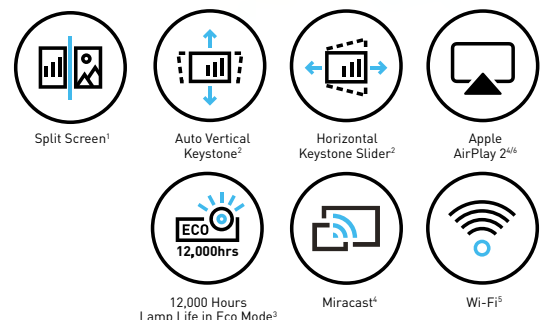


# SMART DISPLAY SOLUTIONS FOR EVERY NEED.



## Enjoy crisp visuals and easy setup with Epson projectors, designed for modern workspaces and classrooms.

Take control of your presentations with Epson's reliable, high-performance business projectors. Whether you're leading a boardroom meeting or teaching in a busy classroom, these projectors deliver crystal-clear visuals that make your content shine. Say goodbye to complicated setups – our wireless projection feature lets you connect directly from compatible smart devices with ease, no extra software needed. Flexible, user-friendly and built to impress, Epson projector is your smart choice for impactful presentations every time.



**ENGINEERED FOR good**



### Sharper, Brighter Visuals

Epson's 3LCD technology delivers sharp visuals with up to 4,100 lumens², ensuring vibrant images even in bright environments.

### Designed for Usability

With their compact design and portability, these projectors offer multiple connectivity options, ensuring instant setup and seamless performance.

### Durable Performance

Enjoy reliable performance with various user-friendly options and an extended lamp life, ensuring consistent results over time.

<sup>1</sup>Except for EB-FH54. <sup>2</sup>For selected models only. <sup>3</sup>Lamp life for EB-W56S is 17,000 hours. <sup>4</sup>Only for EB-FH54. <sup>5</sup>Optional for some models. Not applicable for EB-E24, EB-W53 and EB-E12.

<sup>6</sup>AirPlay 2 is a wireless media streaming protocol developed by Apple.

# Outstanding Image Quality

Epson's 3LCD technology delivers exceptional color brightness, ensuring vibrant, clear visuals even in well-lit conference rooms, classrooms, or retail spaces. With up to 4,100 lumens\*, these projectors provide superior clarity and impact, making them the perfect choice for professional presentations in bright environments.

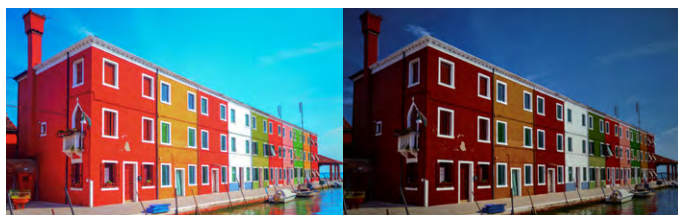
\*For EB-FH54.

## Higher Colour Light Output

Epson's 3LCD technology delivers bright images with vivid colours, offering balanced white and colour light output, along with superior colour brightness for more vibrant images than 1-chip projectors.



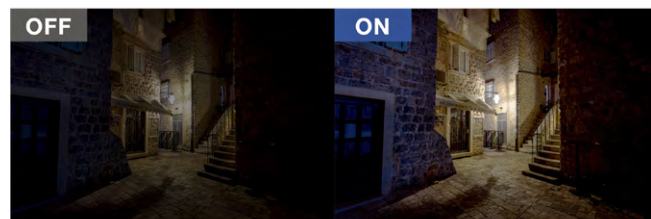
1-chip Technology



## Scene Adaptive Gamma

Except for EB-E24

Automatically adjusts the gamma level based on the content being displayed, optimising contrast and image quality for each scene. It analyses the image frame by frame, dynamically adjusting the gamma to ensure a more vivid and natural-looking picture, even in both dark and bright scenes.



## The Importance of Higher Resolution

High-resolution projectors capture every detail from PCs and other devices, ensuring seamless communication. As screen size increases, so does the need for higher resolution to maintain clear, sharp images. For example, SVGA resolution often falls short in providing the clarity required for smooth communication.

Epson's latest business projector lineup offers models in XGA, WXGA, and 1080p resolutions. The 1080p model, in particular, delivers crisp, sharp text and more detailed images, making it ideal for professional presentations.

**Higher Resolution = Clearer Images and Sharper Text**



**Higher Resolution = Display More Detail and Information**







# Bigger Screens for Better Impact

Epson business projectors deliver larger images, with screen sizes up to 300 inches\*, offering better visibility and brighter images that remain clearly visible even from the back of the room. This ensures a stress-free viewing experience for everyone.

\* Maximum screen size varies depending on model.



## Split Screen Function for Corporate

Except for EB-FH54

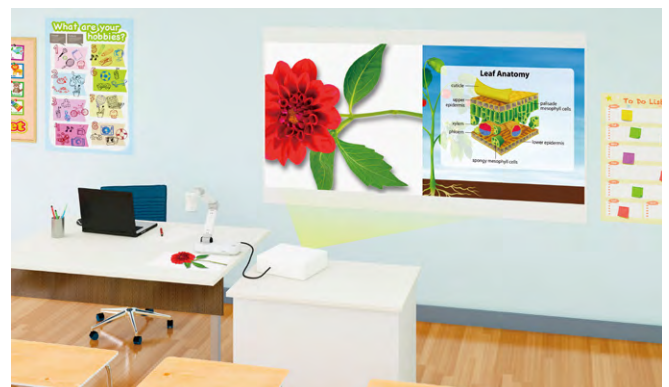
The split screen function allows two image sources to be projected on a single screen, eliminating the need for a second projector. This feature is ideal for video conferencing, enabling efficient multitasking during meetings.



## Split Screen Function for Education

Except for EB-FH54

In classrooms, the split screen function projects two images from separate devices, both wired and wirelessly. Connecting a projector to a document camera and a PC or tablet makes lessons more interactive and engaging.



# Portability Meets Versatility

## Easy To Carry

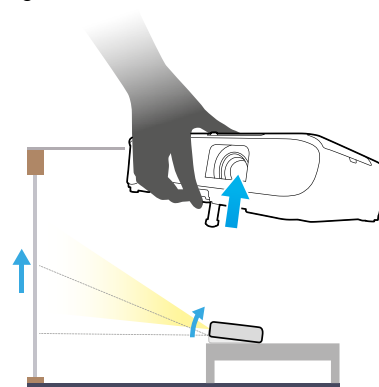
The Epson business projectors feature a compact design, making them easy to carry from one room to another, especially when compared to conventional flat panel displays (FPD).



Note: The projector carrying case is sold separately as an optional accessory.

## Quick and Easy Positioning

Allows for easy adjustment and a wide range of projection positions using the foot lever.



## Optical Zoom

Except for EB-E12, E24, W53 & W56S

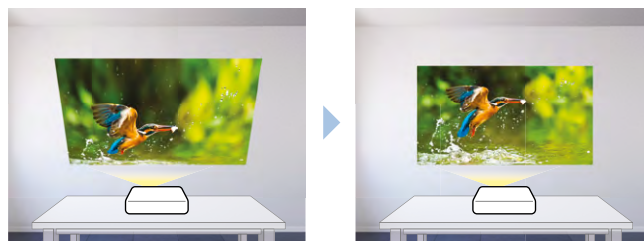
Optical zoom provides the flexibility to adjust the projector's installation location while still maintaining the desired picture size and quality.



## Auto Vertical Keystone

Except for EB-E12, E24 & W53

Saving setup time, Auto Vertical Keystone automatically detects and corrects image distortion when the foot lever is used to adjust the height of a projected image.



## Auto Source Search

Automatically detects the input signal and projects the image without the need for a remote control or manual button operation.

## Horizontal Keystone Slider

Except for EB-E12, W53 & W56S

With the easy-to-use sliding Horizontal Keystone Slider, screen corrections can be done quickly, easily, and accurately, even in a limited space.







# Plug-in and Present

## Screen Mirroring with Miracast®

Only for EB-FH54

Miracast support makes it easy to connect smart devices or laptops to the projector wirelessly– no additional accessories or app installations required. This quick and seamless connection enables smarter presentations and eliminates the hassle of messy cables.

### Dual Connection

Easily connect to two devices simultaneously using Miracast. This feature improves flexibility and saves time during meetings or lessons.

- Seamlessly switch between two connected devices without disconnecting each time
- Supports split screen with two Miracast sources for enhanced productivity

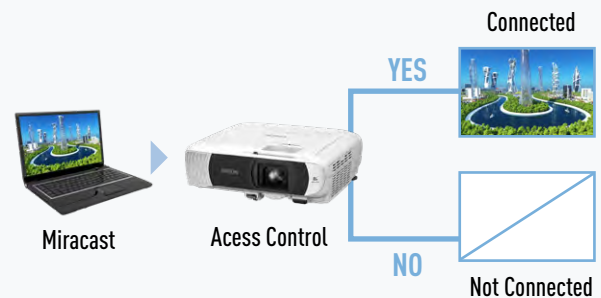


Miracast® is a registered trademark of Wi-Fi Alliance®.

### Enhanced Secure Connection

Keep your wireless connections secure and under control with added Miracast safety features.

- Prevents unintended or unauthorised Miracast connections
- “Access Control” lets the moderator approve connection requests
- Specific devices can be added to a blacklist to deny future connection attempts



## Up to Four Screens at once with iProjection

Except for EB-E12, E24 & W53

Use the Epson iProjection\* app to wirelessly share and control content from up to four connected devices simultaneously. The app also allows you to transfer still images and files from your smart device for smooth, wireless projection.

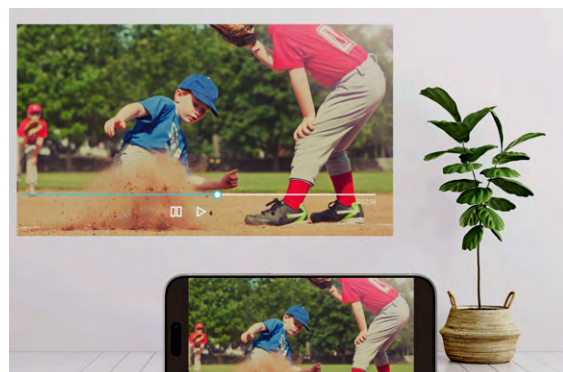


\* Epson iProjection eliminates the need for annoying cabling by transferring still images and supported files from smart devices to projectors, for smooth wireless projection.

## Seamless Streaming Made Easy with AirPlay 2

Only for EB-FH54

This projector features built-in Apple AirPlay 2, making it easy to stream videos, music, photos, and more directly from your iPhone, iPad, or Mac, with synchronized playback across other AirPlay-enabled devices.



Disclaimer: AirPlay 2 is a wireless media streaming protocol developed by Apple.

# Smart Features For Smooth Operation

## Lens Shutter Except for EB-E12, W53 & W56S

The lens shutter can be used to quickly stop and start projection without actually turning power off and on. This feature temporarily blocks an image projected onto a whiteboard, allowing the whiteboard to be used.



## Home Screen

The home screen offers quick access to frequently used functions. Connected interfaces can be recognised at a glance and switched instantaneously. The information needed when setting up a wireless connection is projected on-screen, making connection fast and easy.



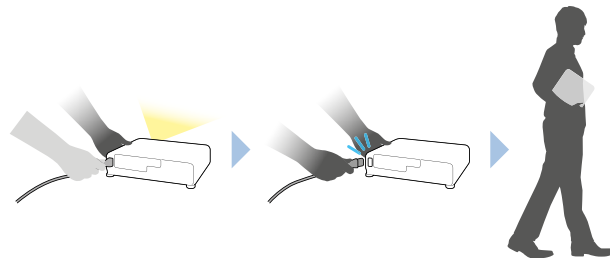
## Auto Power On Supported interface varies per model

This feature can be used to automatically power up a projector when the projector is connected by cable to a device such as PC, saving setup time.



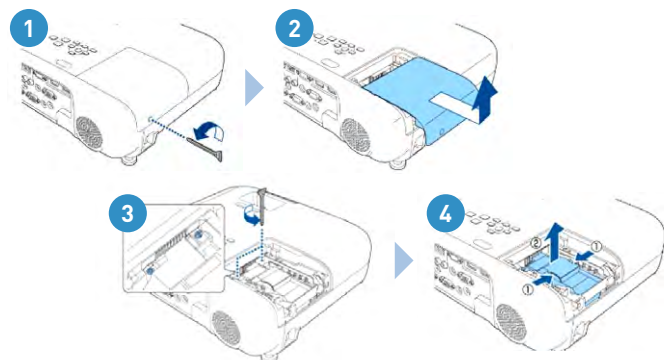
## Direct Power Off

Simply unplug the power cable to turn off the projector after use and speed up clean-up after meetings and lessons.



## Easy Lamp Replacement

When it's time to replace the lamp, simply purchase and install it yourself. No additional service required. This saves time and keeps maintenance hassle free.



## Built-in Speaker

A powerful speaker delivers clear sound even in large rooms, eliminating the need to set up additional speakers.





# Reliable and Low Maintenance

## Easy Maintenance and Longer Lamp Life

A long lamp life reduces maintenance and costs. The lamp lasts up to 12,000 hours in ECO mode, equivalent to 10 years of use. This reduces the frequency of lamp replacements, saving you time and money while lowering the total cost of ownership.

Note: EB-W56S can last up to 17,000 hours in ECO mode.



## WPA2 / WPA3-Enterprise For EB-FH54

WPA2/WPA3-Enterprise provides a safe method of wireless connectivity so that projectors can connect to a business environment over a secure wireless network.



## MODEL COMPATIBILITY OVERVIEW

	EB-E12	EB-E24	EB-X52	EB-W53	EB-W55	EB-FH54	EB-W56S
White/Colour Light Output	3,600lm	3,600lm	3,800lm	4,000lm	4,000lm	4,100lm	3,700lm
Colour Light Output	●	●	●	●	●	●	●
Resolution	XGA	XGA	XGA	WXGA	WXGA	1080p	WXGA
Scene Adaptive Gamma	●		●	●	●	●	●
Bigger and Brighter Images	●	●	●	●	●	●	●
Up to Four Screens at Once with iProjection			●		●	●	●
Split Screen Function	●	●	●	●	●		●
Split Screen Function for Wired/Non-Wired Devices			●		●		●
Optical Zoom			1 – 1.2		1 – 1.2	1 – 1.62	
Auto Vertical Keystone			●		●	●	●
Horizontal Keystone Slider		●	●		●	●	
Screen Mirroring with Miracast®						●	
AirPlay 2						●	
Wi-Fi 6						●	
USB-A 5V2A Power Supply			●		●	●	
Lamp Life	12,000 hrs/Eco	12,000 hrs/Eco	12,000 hrs/Eco	12,000 hrs/Eco	12,000 hrs/Eco	12,000 hrs/Eco	17,000 hrs/Eco
WPA2/WPA3-Enterprise						●	
Lens Shutter		●	●		●	●	
Home Screen	●	●	●	●	●	●	●
Auto Power On	●	●	●	●	●	●	●
Direct Power On	●	●	●	●	●	●	●
Built-in Speaker	2W	5W	2W	2W	2W	16W	16W

## SPECIFICATIONS

MODEL NUMBER		EB-E12	EB-E24	
SKU Code		V11HB55052	V11HB51052	
Projection Technology		RGB liquid crystal shutter projection system (3LCD)		
Specifications of Main Parts				
LCD	Size	0.55" (C2 Fine)		
	Driving Method	Poly-silicon TFT active matrix		
	Pixel Number	786,432 dots (1024 x 768) x 3		
	Native Resolution	XGA		
	Aspect Ratio	4:3		
Projection Lens	Pixel Arrangement	Cross stripe		
	Type	No Optical Zoom / Focus (Manual)		
	F-Number	1.44		
	Focal Length	16.7 mm		
	Zoom Ratio	1.0 - 2.0 (Digital Zoom)		
Lightsource	Throw Ratio	1.44 – 2.88		
	Lamp Type	210 W UHE		
	Life (Normal / Eco)	6,000 hours / 12,000 hours		
	Screen Size (Projected Distance)			
	Zoom: Wide	30" – 350" [0.87 – 10.34 m]		
Zoom: Tele	15" – 175" [0.87 - 10.34 m]			
Standard Screen Size	60" [1.76 m]			
Brightness <sup>1</sup>				
White Light Output (Normal / Eco)	3,600 lm / 2,200 lm   3,600 lm / 2,100 lm			
Colour Light Output	3,600 lm			
Light Output (Center) <sup>2</sup>	3,700 lm			
Contrast Ratio				
	15,000:1			
Geometric Correction				
Vertical / Horizontal Keystone	±30° / ±30°			
Connectivity				
Analog Input	D-Sub 15pin	N/A	2 (RGB, RGB Video)	
	RCA	N/A	1	
Digital Input	HDMI Type A	2 (HDCP 1.4)	1 (HDCP 1.4)	
Analog Output	D-Sub 15pin	N/A	1 (RGB, RGB Video)	
USB Input	USB Type B	1 (For Firmware Update, Copy OSD Settings)		
Control I/O	RS-232C	N/A	1 (D-Sub 9pin)	
Audio Input	Stereo Mini	N/A	2	
Audio Output	Stereo Mini	N/A	1	
	2RCA	N/A	1	
	(White x1, Red x1)			
Internal Speaker		Monaural 2W x 1	Monaural 5W x 1	
Operating Temperature				
Low Altitude (0 - 2,286m/7,500ft): 5 - 40 °C <41 - 104 °F>				
High Altitude (Over 2,286m/7,500ft): 5 - 35 °C <41 - 95°F>				
20% - 80% Humidity, No Condensation				
Operating Altitude				
Over 1,500m/4,921ft with High Altitude Mode: 0 - 3,048m (0 - 10,000ft)				
Direct Power On / Off				
Yes				
Start-Up Period				
Less than 7 seconds (Epson Logo); Warm-up Period: 30 seconds				
Cool Down Period				
Instant Off				
Air Filter		Electrostatic Filter		
	Type			
	Maintenance Cycle <sup>3</sup>	6,000 hours (Normal) / 12,000 hours (Eco)		
Power Supply Voltage				
100 - 240 V AC ±10%, 50/60 Hz				
Power Consumption (220 - 240V)				
Lamp On	Normal	332 W		
	Extended	231 W		
Standby (Normal / Eco)		N/A / 0.3 W		
Dimension Excluding Feet (W x D x H)				
		302 x 234 x 77 mm	302 x 249 x 87 mm	
Weight				
		Approx. 2.4kg	Approx. 2.7kg	
Fan Noise (Normal / Eco)				
		37dB / 28dB		

### Supplied Accessories

Power Cable: 1.8m, 3 wire  
Remote Control: Yes, with Alkaline AA Battery  
User Guide

### Optional Accessories

Spare Lamp: ELPLP97  
Air Filter: ELPAF32  
Soft Carrying Case: ELPKS69  
Ceiling Mount: ELPMB23  
Document Camera: ELPDC13, ELPDC21, ELPDC30  
Streaming Media Player: ELPAP12

EB-E12



EB-E24



©2025 Epson Singapore Pte Ltd. All Rights Reserved.  
Reproduction in part or in whole, without the written permission from Epson, is strictly prohibited.

EPSON is a registered trademark of Seiko Epson Corporation.

All other product and company names used herein are for identification purposes only and are the trademarks or registered trademarks of their respective owners.

Epson disclaims any and all rights in those marks. Projected images shown herein are simulations. The actual product design and contents may vary. Specifications are subject to change without notice and may vary between countries. Please check with local Epson offices for more information.

Apple, iPad and iPhone are trademarks of Apple Inc., registered in the U.S. and other countries. App Store is a service mark of Apple Inc.

Android is a trademark of Google Inc.

Dealer's Stamp

Information correct at time of printing.  
Printed June 2025

<sup>1</sup> Colour brightness (colour light output) and white brightness (white light output) will vary depending on usage conditions. Colour light output measured in accordance with IDMS 15:4; white light output measured in accordance with ISO 21118.

<sup>2</sup> This light output value is measured at the centre of the screen as a reference value. There is no official standard for light output (Centre) measurements and this measurement is made based on the method set by Epson.

<sup>3</sup> When used in the general office environment (the amount of floating dust: 0.04 - 0.2 mg/m<sup>3</sup>). Based on the Epson's in-house test results.



## SPECIFICATIONS

<b>MODEL NUMBER</b>		<b>EB-X52</b>
<b>SKU Code</b>		V11HB56052
<b>Projection Technology</b>		RGB liquid crystal shutter projection system (3LCD)
<b>Specifications of Main Parts</b>		
LCD	Size	0.55" (C2 Fine)
	Driving Method	Poly-silicon TFT active matrix
	Pixel Number	786,432 dots (1024 x 768) x 3
	Native Resolution	XGA
	Aspect Ratio	4:3
Projection Lens	Pixel Arrangement	Cross stripe
	Type	Optical Zoom (Manual) / Focus (Manual)
	F-Number	1.49 – 1.72
	Focal Length	16.9 – 20.28 mm
	Zoom Ratio	1.0 - 1.2
Lightsource	Throw Ratio	1.48 – 1.77
	Lamp Type	210 W UHE
	Life (Normal / Eco)	6,000 hours / 12,000 hours
<b>Screen Size (Projected Distance)</b>		
Zoom: Wide		30" – 300" [0.89 – 9.12 m]
Zoom: Tele		30" – 300" [1.07 - 10.95 m]
Standard Screen Size		60" [1.8 - 2.17 m]
<b>Brightness<sup>1</sup></b>		
White Light Output (Normal / Eco)		3,800 lm / 2,500 lm
Colour Light Output		3,800 lm
Light Output (Center) <sup>2</sup>		4,000 lm
<b>Contrast Ratio</b>		16,000:1
<b>Geometric Correction</b>		
Vertical / Horizontal Keystone		±30° / ±30°
Auto Keystone		Yes (V only)
<b>Connectivity</b>		
Digital Input	HDMI	2 (HDCP 1.4)
USB Input	USB Type A	1 (For Wireless LAN, Firmware Update, Copy OSD Settings)
	USB Type B	1 (For Firmware Update, Copy OSD Settings)
Wireless LAN		Optional
<b>Internal Speaker</b>		Monaural 2W x 1
<b>Wireless Specification (Optional Wireless LAN)</b>		
Supported Speed		IEEE 802.11a/b/g/n
Supported Mode		Infrastructure, Simple AP (Wi-Fi Direct)
Security Type		Infrastructure: Open, WPA2 / WPA3-PSK Simple AP (Wi-Fi Direct): OPEN, WPA2-PSK (AES)
<b>Operating Temperature</b>		
<b>Operating Altitude</b>		
<b>Direct Power On / Off</b>		Low Altitude (0 - 2,286m/7,500ft): 5 - 40 °C <41 - 104 °F> High Altitude (Over 2,286m/7,500ft): 5 - 35 °C <41 - 95°F> 20% - 80% Humidity, No Condensation
<b>Start-Up Period</b>		Over 1,500m/4,921ft with High Altitude Mode: 0 - 3,048m (0 -10,000ft)
<b>Cool Down Period</b>		Yes
<b>Air Filter</b>		Less than 7 seconds (Epson Logo); Warm-up Period: 30 seconds
Type		Instant Off
Maintenance Cycle <sup>*3</sup>		Electrostatic Filter
<b>Power Supply Voltage</b>		6,000 hours (Normal) / 12,000 hours (Eco)
<b>Power Consumption (220 - 240V)</b>		100 - 240 V AC ±10%, 50/60 Hz
Lamp On	Normal	332 W
	Extended	231 W
Standby (Normal / Eco)		2.0 / 0.3 W
<b>Dimension Excluding Feet (W x D x H)</b>		302 x 234 x 77 mm
<b>Weight</b>		Approx. 2.5kg
<b>Fan Noise (Normal / Eco)</b>		37dB / 28dB

### Supplied Accessories

Power Cable: 1.8m, 3 wire  
HDMI Cable: 1.8m  
Remote Control: Yes, with Alkaline AA Battery  
User Guide

### Optional Accessories

Spare Lamp: ELPLP97  
Air Filter: ELPAF32  
Soft Carrying Case: ELPKS69  
Ceiling Mount: ELPMB23  
Wireless LAN Unit: ELPAP11  
USB Document Camera: ELPDC07  
Document Camera: ELPDC13, ELPDC21, ELPDC30  
Streaming Media Player: ELPAP12

EB-X52



©2025 Epson Singapore Pte Ltd. All Rights Reserved.  
Reproduction in part or in whole, without the written permission from Epson, is strictly prohibited.

EPSON is a registered trademark of Seiko Epson Corporation.

All other product and company names used herein are for identification purposes only and are the trademarks or registered trademarks of their respective owners.

Epson disclaims any and all rights in those marks. Projected images shown herein are simulations. The actual product design and contents may vary. Specifications are subject to change without notice and may vary between countries. Please check with local Epson offices for more information.

Apple, iPad and iPhone are trademarks of Apple Inc., registered in the U.S. and other countries. App Store is a service mark of Apple Inc.

Android is a trademark of Google Inc.

Dealer's Stamp

Information correct at time of printing.  
Printed June 2025

<sup>\*1</sup> Colour brightness (colour light output) and white brightness (white light output) will vary depending on usage conditions. Colour light output measured in accordance with IDMS 15:4; white light output measured in accordance with ISO 21118.

<sup>\*2</sup> This light output value is measured at the centre of the screen as a reference value. There is no official standard for light output (Centre) measurements and this measurement is made based on the method set by Epson.

<sup>\*3</sup> When used in the general office environment (the amount of floating dust: 0.04 - 0.2 mg/m<sup>3</sup>). Based on the Epson's in-house test results.

## SPECIFICATIONS

MODEL NUMBER		EB-W53	EB-W55	
SKU Code		V11HB57052	V11HB58052	
Projection Technology		RGB liquid crystal shutter projection system (3LCD)		
Specifications of Main Parts				
LCD	Size	0.59" (C2 Fine)		
	Driving Method	Poly-silicon TFT active matrix		
	Pixel Number	1,024,000 dots (1280 x 800) x 3		
	Native Resolution	WXGA		
	Aspect Ratio	16:10		
Projection Lens	Pixel Arrangement	Cross stripe		
	Type	No Optical Zoom / Focus (Manual)	Optical Zoom (Manual) / Focus (Manual)	
	F-Number	1.44	1.49 – 1.72	
	Focal Length	16.7 mm	16.9 – 20.28 mm	
	Zoom Ratio	1.0 - 2.0 (Digital Zoom)	1.0 - 1.2	
Lightsource	Throw Ratio	1.27 – 2.54	1.30 – 1.56	
	Lamp Type	210 W UHE		
	Life (Normal / Eco)	6,000 hours / 12,000 hours		
	Screen Size [Projected Distance]			
	Zoom: Wide	33" – 375" [0.89 – 10.34 m]	33" – 320" [0.91 – 9.07 m]	
Zoom: Tele	16" – 188" [0.89 - 10.34 m]	33" – 320" [1.10 - 10.89 m]		
Standard Screen Size	60" [1.64 m]	60" [1.68 - 2.02 m]		
Brightness <sup>1</sup>				
White Light Output (Normal / Eco)		4,000 lm / 2,600 lm		
Colour Light Output		4,000 lm		
Light Output (Center) <sup>2</sup>		4,100 lm		
Contrast Ratio				
		16,000:1		
Geometric Correction				
Vertical / Horizontal Keystone		±30° / ±30°		
Auto Keystone Correction		NA	Yes (V only)	
Connectivity				
Digital Input	HDMI	2 (HDCP 1.4)		
USB Input	USB Type A	N/A	1 (For Firmware Update, Copy OSD Settings)	
	USB Type B	1 (For Firmware Update, Copy OSD Settings)		
Network	Wireless LAN	N/A	Built-in	
Internal Speaker				
		Monaural 2W x 1		
Wireless Specification (Built-in Wireless LAN)				
Supported Speed		N/A	IEEE 802.11a/b/g/n	
Supported Interface		N/A	Infrastructure, Simple AP (Wi-Fi Direct)	
Security Type		N/A	Infrastructure: Open, WPA2 / WPA3-PSK Simple AP (Wi-Fi Direct): OPEN, WPA2-PSK (AES)	
Operating Temperature				
		Low Altitude (0 - 2,286m/7,500ft): 5 - 40 °C <41 - 104 °F> High Altitude (Over 2,286m/7,500ft): 5 - 35 °C <41 - 95°F> 20% - 80% Humidity, No Condensation		
Operating Altitude				
		Over 1,500m/4,921ft with High Altitude Mode: 0 - 3,048m (0 - 10,000ft)		
Direct Power On / Off				
		Yes		
Start-Up Period				
		Less than 7 seconds (Epson Logo); Warm-up Period: 30 seconds		
Cool Down Period				
		Instant Off		
Air Filter				
Type		Electrostatic Filter		
Maintenance Cycle <sup>3</sup>		6,000 hours (Normal) / 12,000 hours (Eco)		
Power Supply Voltage				
		100 - 240 V AC ±10%, 50/60 Hz		
Power Consumption (220 - 240V)				
Lamp On	Normal	332 W		
	Extended	231 W		
Standby (Normal / Eco)		N/A / 0.3 W	2.0 / 0.3 W	
Dimension Excluding Feet (W x D x H)				
		302 x 234 x 77 mm	302 x 234 x 87 mm	
Weight				
		Approx. 2.5kg	Approx. 2.6kg	
Fan Noise (Normal / Eco)				
		37dB / 28dB		

### Supplied Accessories

Power Cable: 1.8m, 3 wire  
HDMI Cable: 1.8m  
Remote Control: Yes, with Alkaline AA Battery  
User Guide

### Optional Accessories

Spare Lamp: ELPLP97  
Air Filter: ELPAF32  
Soft Carrying Case: ELPKS69  
Ceiling Mount: ELPMB23  
USB Document Camera (EB-W55): ELPDC07  
Document Camera: ELPDC13, ELPDC21, ELPDC30  
Streaming Media Player: ELPAP12

EB-W53



EB-W55



©2025 Epson Singapore Pte Ltd. All Rights Reserved.  
Reproduction in part or in whole, without the written permission from Epson, is strictly prohibited.

EPSON is a registered trademark of Seiko Epson Corporation.

All other product and company names used herein are for identification purposes only and are the trademarks or registered trademarks of their respective owners.

Epson disclaims any and all rights in those marks. Projected images shown herein are simulations. The actual product design and contents may vary. Specifications are subject to change without notice and may vary between countries. Please check with local Epson offices for more information.

Apple, iPad and iPhone are trademarks of Apple Inc., registered in the U.S. and other countries. App Store is a service mark of Apple Inc.

Android is a trademark of Google Inc.

Dealer's Stamp

Information correct at time of printing.  
Printed June 2025

<sup>1</sup> Colour brightness (colour light output) and white brightness (white light output) will vary depending on usage conditions. Colour light output measured in accordance with IDMS 15:4; white light output measured in accordance with ISO 21118.

<sup>2</sup> This light output value is measured at the centre of the screen as a reference value. There is no official standard for light output (Centre) measurements and this measurement is made based on the method set by Epson.

<sup>3</sup> When used in the general office environment (the amount of floating dust: 0.04 - 0.2 mg/m<sup>3</sup>). Based on the Epson's in-house test results.

Find out more at [www.epson.com.sg/projectors](http://www.epson.com.sg/projectors)

EpsonSingapore EpsonSingapore EpsonSoutheastAsia Epson Singapore EpsonSingapore

**Epson Singapore Pte Ltd**  
**Epson Authorised Service Centre**

438B Alexandra Road, Block B Alexandra Technopark, #04-01/04, Singapore 119968. Tel: (65) 6586-5500  
6 Harper Road, #04-01 Leong Huat Building, Singapore 369674. Epson Helpdesk: 800-120-5564. Please refer to [www.epson.com.sg/contact](http://www.epson.com.sg/contact) for opening hours.

## SPECIFICATIONS

<b>MODEL NUMBER</b>		<b>EB-FH54</b>
<b>SKU Code</b>		V11HB59052
<b>Projection Technology</b>		RGB liquid crystal shutter projection system (3LCD)
<b>Specifications of Main Parts</b>		
LCD	Size	0.62" (C2 Fine)
	Driving Method	Poly-silicon TFT active matrix
	Pixel Number	2,073,600 dots (1920 x 1080) x 3
	Native Resolution	Full HD
	Aspect Ratio	16:9
Projection Lens	Pixel Arrangement	Cross stripe
	Type	Optical Zoom (Manual) / Focus (Manual)
	F-Number	1.51 – 1.77
	Focal Length	18.2 – 29.1 mm
	Zoom Ratio	1.0 - 1.62
Lightsource	Throw Ratio	1.30 – 2.09
	Lamp Type	230 W UHE
	Life (Normal / Eco)	5,500 hours / 12,000 hours
<b>Screen Size (Projected Distance)</b>		
Zoom: Wide		31" – 304" [0.88 – 8.88 m]
Zoom: Tele		31" – 304" [1.43 - 14.29 m]
Standard Screen Size		60" [1.73 - 2.80 m]
<b>Brightness<sup>1</sup></b>		
White Light Output (Normal / Eco)		4,100 lm / 2,300 lm
Colour Light Output		4,100 lm
Light Output (Center) <sup>2</sup>		4,400 lm
<b>Contrast Ratio</b>		16,000:1
<b>Geometric Correction</b>		
Vertical / Horizontal Keystone		±30° / ±30°
Auto Keystone Correction		Yes (V only)
<b>Internal Speaker</b>		Monaural 16W x 1
<b>Connectivity</b>		
Digital Input	HDMI	2 (HDCP 1.4)
Audio Output	Stereo Mini	1
USB Input	USB Type A	1 (For Wireless LAN, Firmware Update, Copy OSD Settings)
	USB Type B	1 (For Firmware Update, Copy OSD Settings)
Network	Wireless LAN	Built-in
<b>Miracast</b>		
Certification		Wi-Fi CERTIFIED Miracast R2
Supported Codec		H.264 (AVC)
<b>AirPlay 2</b>		
Supported Codec		H.264(AVC), H.265(HEVC), AV1, VP9, MPEG-2, MPEG-4
<b>Wireless Specification (Built-in Wireless LAN)</b>		
Supported Speed		IEEE 802.11a/b/g/n/ac/ax
Supported Interface		Infrastructure, Simple AP (Wi-Fi Direct)
Security Type	Infrastructure: Open, WPA2 / WPA3-PSK, WPA2/WPA3-EAP	
	Supported EAP Type: PEAP, EAP-TLS	
	Simple AP (Wi-Fi Direct): WPA2-PSK (AES)	
<b>Operating Temperature</b>		
Low Altitude (0 - 2,286m/7,500ft):		5 - 40 °C <41 - 104 °F>
High Altitude (Over 2,286m/7,500ft):		5 - 35 °C <41 - 95°F>
20% - 80% Humidity, No Condensation		
Over 1,500m/4,921ft with High Altitude Mode:		0 - 3,048m (0 - 10,000ft)
<b>Operating Altitude</b>		
<b>Direct Power On / Off</b>		Yes
<b>Start-Up Period</b>		Less than 8 seconds (Epson Logo); Warm-up Period: 30 seconds
<b>Cool Down Period</b>		Instant Off
<b>Air Filter</b>	Type	Electrostatic Filter
	Maintenance Cycle <sup>*3</sup>	10,000 hours (Normal) / 20,000 hours (Eco)
<b>Power Supply Voltage</b>		100 - 240 V AC ±10%, 50/60 Hz
<b>Power Consumption (220 - 240V)</b>		
Lamp On	Normal	332 W
	Extended	231 W
Standby (Normal / Eco)		N/A / 0.3 W
<b>Dimension Excluding Feet (W x D x H)</b>		309 x 282 x 90 mm
<b>Weight</b>		Approx. 3.1kg
<b>Fan Noise (Normal / Eco)</b>		37dB / 28dB

### Supplied Accessories

Power Cable: 3m, 3 wire  
HDMI Cable: 1.8m  
Remote Control: Yes, with Alkaline AA Battery  
User Guide

### Optional Accessories

Spare Lamp: ELPLP97  
Air Filter: ELPAF54  
Soft Carrying Case: ELPKS70  
Ceiling Mount: ELPMB23  
USB Document Camera: ELPDC07  
Document Camera: ELPDC13, ELPDC21, ELPDC30  
Streaming Media Player: ELPAP12

EB-FH54



©2025 Epson Singapore Pte Ltd. All Rights Reserved.  
Reproduction in part or in whole, without the written permission from Epson, is strictly prohibited.

EPSON is a registered trademark of Seiko Epson Corporation.

All other product and company names used herein are for identification purposes only and are the trademarks or registered trademarks of their respective owners.

Epson disclaims any and all rights in those marks. Projected images shown herein are simulations. The actual product design and contents may vary. Specifications are subject to change without notice and may vary between countries. Please check with local Epson offices for more information.

Apple, iPad and iPhone are trademarks of Apple Inc., registered in the U.S. and other countries. App Store is a service mark of Apple Inc.

Android is a trademark of Google Inc.

Dealer's Stamp

<sup>\*1</sup> Colour brightness (colour light output) and white brightness (white light output) will vary depending on usage conditions. Colour light output measured in accordance with IDMS 15:4; white light output measured in accordance with ISO 21118.

<sup>\*2</sup> This light output value is measured at the centre of the screen as a reference value. There is no official standard for light output (Centre) measurements and this measurement is made based on the method set by Epson.

<sup>\*3</sup> When used in the general office environment (the amount of floating dust: 0.04 - 0.2 mg/m3). Based on the Epson's in-house test results.

Information correct at time of printing.  
Printed June 2025

Find out more at [www.epson.com.sg/projectors](http://www.epson.com.sg/projectors)

EpsonSingapore EpsonSingapore EpsonSoutheastAsia Epson Singapore EpsonSingapore

**Epson Singapore Pte Ltd** 438B Alexandra Road, Block B Alexandra Technopark, #04-01/04, Singapore 119968. Tel: (65) 6586-5500  
**Epson Authorised Service Centre** 6 Harper Road, #04-01 Leong Huat Building, Singapore 369674. Epson Helpdesk: 800-120-5564. Please refer to [www.epson.com.sg/contact](http://www.epson.com.sg/contact) for opening hours.



## SPECIFICATIONS

<b>MODEL NUMBER</b>		<b>EB-W56S</b>
<b>SKU Code</b>		V11HB62052
<b>Projection Technology</b>		RGB liquid crystal shutter projection system (3LCD)
<b>Specifications of Main Parts</b>		
LCD	Size	0.59" (G2 Fine)
	Driving Method	Poly-silicon TFT active matrix
	Pixel Number	1,024,000 dots (1280 x 800) x 3
	Native Resolution	WXGA
	Aspect Ratio	16:10
Projection Lens	Pixel Arrangement	Cross stripe
	Type	No Optical Zoom / Focus (Manual)
	F-Number	1.8
	Focal Length	7.8 mm
	Zoom Ratio	1.0 – 1.35 (Digital Zoom)
Lightsource	Throw Ratio	0.60 – 0.81
	Lamp Type	230 W UHE
	Life (Normal / Medium / Eco)	6,500 hours / 10,000 hours / 17,000 hours
<b>Screen Size (Projected Distance)</b>		
Zoom: Wide		50" – 300" [0.64 – 3.94 m]
Zoom: Tele		37" – 222" [0.64 - 3.94 m]
Standard Screen Size		75" [0.97 m]
<b>Brightness<sup>*1</sup></b>		
White Light Output (Normal / Eco)		3,700 lm / 2,000 lm
Colour Light Output		3,700 lm
Light Output (Center) <sup>*2</sup>		3,900 lm
<b>Contrast Ratio</b>		
		16,000:1
<b>Geometric Correction</b>		
Vertical / Horizontal Keystone		±15° / ±15°
Auto Keystone Correction		Yes (V only)
<b>Internal Speaker</b>		
		Monaural 16W x 1
<b>Connectivity</b>		
Analog Input	D-Sub 15pin	2 (RGB, RGB Video)
	RCA	1
Digital Input	HDMI	2 (HDCP 1.4)
Analog Output	D-Sub 15pin	1 (RGB, RGB Video)
Audio Input	2RCA	1
	(White x1, Red x1)	
Audio Output	Stereo Mini	2
	Stereo Mini	1
Mic Input	Stereo Mini	1
Control	RS-232C	1
USB Input	USB Type A	1 (For Wireless LAN, Firmware Update, Copy OSD Settings)
	USB Type B	1 (For Firmware Update, Copy OSD Settings)
Network	Wired Lan	RJ45 x1
	Wireless LAN	Optional
<b>Wireless Specification (Optional Wireless LAN)</b>		
Supported Speed		IEEE 802.11a/b/g/n
Supported Mode		Infrastructure, Simple AP (Wi-Fi Direct)
Security Type		Infrastructure: Open, WPA2 / WPA3-PSK
		Simple AP (Wi-Fi Direct): OPEN, WPA2-PSK (AES)
<b>Operating Temperature</b>		
		Low Altitude (0 - 2,286m/7,500ft): 5 - 40 °C <41 - 104 °F>
		High Altitude (Over 2,286m/7,500ft): 5 - 35 °C <41 - 95°F>
		20% - 80% Humidity, No Condensation
		Over 1,500m/4,921ft with High Altitude Mode: 0 - 3,048m (0 -10,000ft)
<b>Operating Altitude</b>		
<b>Direct Power On / Off</b>		Yes
<b>Start-Up Period</b>		Less than 7 seconds (Epson Logo); Warm-up Period: 30 seconds
<b>Cool Down Period</b>		Instant Off
<b>Air Filter</b>	Type	Electrostatic Filter
	Maintenance Cycle <sup>*3</sup>	10,000 hours (Normal) / 20,000 hours (Eco)
<b>Power Supply Voltage</b>		100 - 240 V AC ±10%, 50/60 Hz
<b>Power Consumption (220 - 240V)</b>		
Lamp On	Normal	332 W
	Extended	231 W
Standby (Normal / Eco)		2.0/ 0.3 W
<b>Dimension Excluding Feet (W x D x H)</b>		309 x 282 x 90 mm
<b>Weight</b>		Approx. 3.1kg
<b>Fan Noise (Normal / Eco)</b>		38dB / 28dB

<sup>\*1</sup> Colour brightness (colour light output) and white brightness (white light output) will vary depending on usage conditions. Colour light output measured in accordance with IDMS 15:4; white light output measured in accordance with ISO 21118.

<sup>\*2</sup> This light output value is measured at the centre of the screen as a reference value. There is no official standard for light output (Centre) measurements and this measurement is made based on the method set by Epson.

<sup>\*3</sup> When used in the general office environment (the amount of floating dust: 0.04 - 0.2 mg/m3). Based on the Epson's in-house test results.

### Supplied Accessories

Power Cable: 1.8m, 3 wire  
HDMI Cable: 1.8m  
Remote Control: Yes, with Alkaline AA Battery  
User Guide

### Optional Accessories

Spare Lamp: ELPPLP97  
Air Filter: ELPAF54  
Soft Carrying Case: ELPKS70  
Ceiling Mount: ELPMB23  
Wireless LAN Unit: ELPAP11  
USB Document Camera: ELPDC07  
Document Camera: ELPDC13, ELPDC21, ELPDC30

EB-W56S



©2025 Epson Singapore Pte Ltd. All Rights Reserved.  
Reproduction in part or in whole, without the written permission from Epson, is strictly prohibited.

EPSON is a registered trademark of Seiko Epson Corporation.

All other product and company names used herein are for identification purposes only and are the trademarks or registered trademarks of their respective owners.

Epson disclaims any and all rights in those marks. Projected images shown herein are simulations. The actual product design and contents may vary. Specifications are subject to change without notice and may vary between countries. Please check with local Epson offices for more information.

Apple, iPad and iPhone are trademarks of Apple Inc., registered in the U.S. and other countries. App Store is a service mark of Apple Inc.

Android is a trademark of Google Inc.

Dealer's Stamp

Information correct at time of printing.  
Printed June 2025

Find out more at [www.epson.com.sg/projectors](http://www.epson.com.sg/projectors)

EpsonSingapore EpsonSingapore EpsonSoutheastAsia Epson Singapore EpsonSingapore

**Epson Singapore Pte Ltd**  
**Epson Authorised Service Centre**

438B Alexandra Road, Block B Alexandra Technopark, #04-01/04, Singapore 119968. Tel: (65) 6586-5500  
6 Harper Road, #04-01 Leong Huat Building, Singapore 369674. Epson Helpdesk: 800-120-5564. Please refer to [www.epson.com.sg/contact](http://www.epson.com.sg/contact) for opening hours.