

5,200 ANSI lumens projector designed for academic achievement in larger classrooms, corporate boardrooms and campus standard.



Key Features

- XGA 1024 x 768 resolution
- 5,200 ANSI lumens white/color output
- 16,000 : 1 contrast ratio
- 4,500 hours lamp life (Standard mode)
6,000 hours lamp life (Eco mode)*
- 10,000 hours hybrid filter**
- HDCR2 / Accentualizer / Image Optimizer
- Convenient Networking / Wireless Capability
- Mobile High-Definition (MHL™)

As part of Maxell's Classroom and Conference Room Series, the MC-EX5001 combines XGA 1024 x 768 resolution with super-bright 5,200 ANSI lumens white/color light output for a stunning visual achievement. It can transform classrooms, lecture halls, and auditoriums into true learning centers. Incorporating Maxell's leading-edge technology, the MC-EX5001 features an image-enhancing combination of Accentualizer, High Dynamic Contrast Range (HDCR2) and Image Optimizer, all of which contribute to the overall visual experience. Moderator Control Mode allows up to 50 computers to connect to the projector and the moderator can choose which images to show on screen. With the multi projector feature the same image can be projected on up to 12 projectors simultaneously. The MC-EX5001 also includes our iOS application Projector Quick Connection App which offers simple control options including sending photo and document files and web site contents to the projector. For added peace of mind, Maxell's MC-EX5001 is also backed by a generous warranty and our world-class service and support programs.

MC-EX5001

UNIQUE FEATURES

Accentualizer

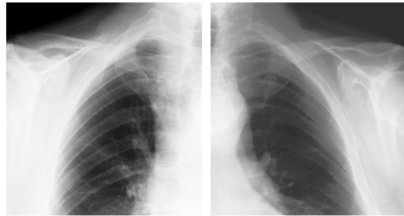
Maxell original technology makes pictures look more real by enhancing sharpness, gloss and shade to make pictures as clear as pictures on a flat-panel device. You can also adjust the effects by three levels according to your surroundings so that the colors of projected images are the actual colors of the objects they represent.



DICOM® Simulation Mode

The DICOM (Digital Imaging and Communications in Medicine) Simulation Mode projects grayscale images which approximate DICOM Part 14 specifications. This mode is ideal for viewing grayscale medical images, such as X-rays, for training and educational purposes.

The projectors have a DICOM (Digital Imaging and Communications in Medicine) Simulation Mode. This mode simulates the DICOM standard, which is a standard applicable to digital communications in medicine, and is useful for displaying medical images such as X-rays. These projectors are not medical devices and are not compliant with the DICOM standard, and neither the projector nor the DICOM Simulation Mode should be used for medical diagnosis. Comparison photos are simulations.



HDCR2 (High Dynamic Contrast Range)

When average projectors are used in bright rooms, the darker colors of an image deteriorate and images become unclear. Using this function, blurred images caused by room lighting or outside light sources are corrected, and an effect similar to increasing contrast occurs. The recent enhancement to HDCR2 achieves not only auto tone enhancement but also auto color enhancement. This results in clear and vivid images even in bright rooms.

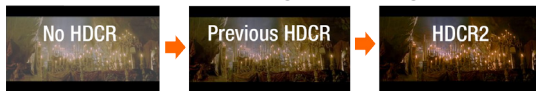
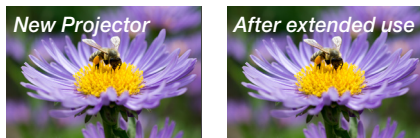


Image Optimizer

The Image Optimizer automatically adjusts HDCR2 and Accentualizer to improve visibility as lamp brightness dims over time.



UNIQUE FEATURES (cont'd)

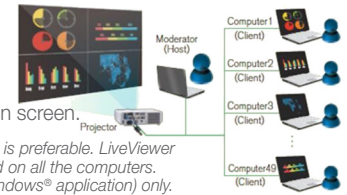
MHL™

MHL (Mobile High-Definition) allows users to mirror their phone/tablet screen with the projector display. It is compatible with any and all apps.



Moderator Control Mode

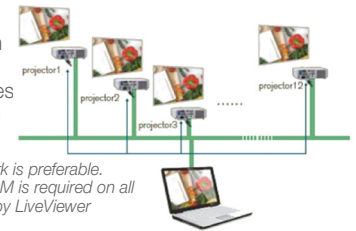
Using Moderator Control Mode, up to 50 computers can be connected to the projector and the moderator (host) can choose which images to display on screen.



To secure better performance, a wired network is preferable. LiveViewer software from the bundled CD-ROM is required on all the computers. The functions are supported by LiveViewer (Windows® application) only. Image transfer speed may vary depending on number of projectors connected.

Multi Projector

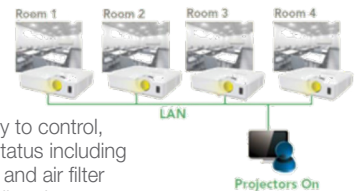
You can project the same image from up to 12 projectors simultaneously. This is useful for meetings and lectures in large venues where a single screen would not be sufficient.



To secure better performance, a wired network is preferable. LiveViewer software from the bundled CD-ROM is required on all the computers. The functions are supported by LiveViewer (Windows® application) only. Image transfer speed may vary depending on number of projectors connected.

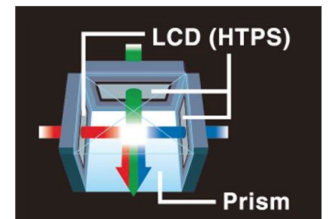
Projector Monitoring and Control from a Remote Location

Maxell's Projector Management Software (PJMan) gives you the ability to control, diagnose and manage (monitor the status including power, lamp hours, and temperature and air filter conditions) a single or group of Maxell projectors.



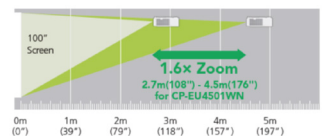
3LCD Chips with Inorganic Alignment Layers

This Maxell LCD projector incorporates three LCD panels with inorganic alignment layers that are extremely light resistant, increasing brightness and contrast ratio. They ensure smooth images and high reliability. (HTPS : High Temperature Poly-Silicon)



1.6 x Zoom Lens

Featuring a powerful 1.6x manual zoom lens, the projector allows for a greater range of installation possibilities.



MX0677-03/19
All specifications subject to change without notice.
3LCD and the 3LCD logo are registered trademarks of the Seiko Epson Corporation.
iPad and iPhone are registered trademarks of Apple Inc., registered in the U.S. and other countries.
©2019 Maxell Corporation of America. All Rights Reserved.

STANDARD FEATURES

Cloning Function: Copy configuration settings from one projector to others of the same model via USB memory. Cloning not only saves almost all PJ settings such as gamma and keystone via USB memory, it saves countless hours in setup and installation.

Easy Event Scheduling: You can schedule routine and special projector events, including power on, power off, input selection and other settings.

E-mail Alerts: E-mail notification is sent for routine maintenance and error conditions.

Network Control, Maintenance and Security: Embedded networking gives you the ability to manage and control multiple projectors over your LAN. Features include scheduling of events, centralized reporting, image transfer and e-mail alerts for reactive and routine maintenance.

PC-Less Presentation: By using a USB memory stick or other storage device, you can use the projector without a computer. Menus are easy to see with a thumbnail display. There is also a slideshow function. This feature also supports the following file types: JPG, PNG, BMP, and GIF.

Perfect Fit 2: Enables the user to adjust individual corners and sides independent of one another. Perfect Fit 2 provides vertical and horizontal digital correction of either barrel or pin cushion distortions. This feature helps correct geometric and complicated distortions. Perfect Fit 2 allows the projected image to fit correctly to the screen quickly and easily.

PIN Lock / MyScreen / MyText: PIN lock protection can limit projector users. MyScreen PIN lock keeps captured images on the startup screen. Users can set any name logo to MyScreen, clearly identifying ownership. MyText provides the ability to write text on the startup screen such as model name, serial number or location.

PJMessenger: PJMessenger function allows you to send and display text messages and audio alerts on your networked projectors. It is an easy and efficient way to send announcements out to multiple units.

Present Content via LAN: Maxell's suite of networking software allows you to easily send content directly from your PC to the projector via your LAN connection.

Projector Quick Connection App For Mobile Devices: Our iOS and Android application offers full projector control and also provides the capability to display photos, document files and web site contents. Available for iPad®, iPhone® and Android devices. Works over your LAN via your RJ-45 port or via an optional USBWL11N wireless adapter.

Wireless Presentation Compatible: Connect the projector to a a computer or your network using the optional USB wireless adapter (part number USBWL11N). The adapter supports IEEE802.11b/g and 11n.



Front View



Ceiling Mount



Rear View



Right Side

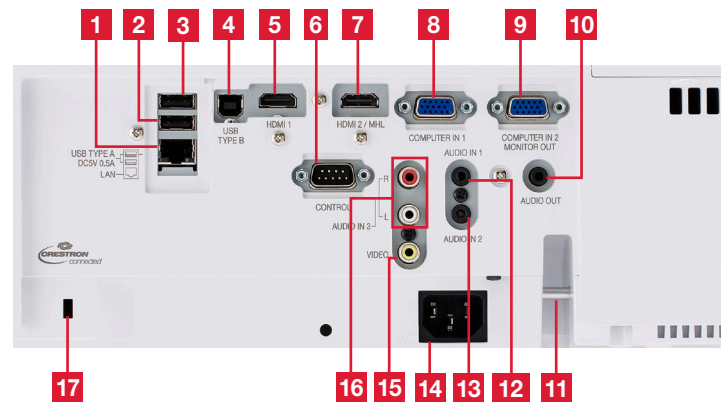


Top View



Left Side

Input/Outputs



- | | | |
|----------------------|--------------------|----------------------|
| 1. LAN | 7. HDMI 2 / MHL | 12. Audio In 1 |
| 2. USB Type A | 8. Computer In 1 | 13. Audio In 2 |
| 3. USB Type A | 9. Computer In 2 / | 14. AC Power |
| 4. USB Type B | Monitor Out | 15. Video |
| 5. HDMI 1 | 10. Audio Out | 16. Audio In 3 (L/R) |
| 6. Control (RS-232C) | 11. Security Bar | 17. Kensington Lock |

MC-EX5001

MX0677-03/19

All specifications subject to change without notice.

3LCD and the 3LCD logo are registered trademarks of the Seiko Epson Corporation.

iPad and iPhone are registered trademarks of Apple Inc., registered in the U.S. and other countries.

©2019 Maxell Corporation of America. All Rights Reserved.

Maxell Corporation of America

Toll Free: 1.800.377.5887

Web: www.maxellproav.com



Accessories and Lenses

Supplied Accessories	Remote control, power cord, computer cable, 2 AA batteries, lens cover, adapter cover, security label, application CD, user's manual CD, user's manual
Optional Accessories	USBWL11N USB wireless adapter
Replacement Parts	
Lamp	DT02061
Remote Control	HL03037
Filter	UX41161

Projection Throw Chart (In inches)

Screen Size 4:3		Throw Distance	
Diagonal	Width	Min	Max
30	24	30	51
60	48	65	106
80	64	87	143
100	80	110	180
200	160	224	363
300	240	338	547

Throw Ratio: 1.4 - 2.3 : 1 (distance : width)

Specifications

Display	Projection Technology	3LCD, 3 chip technology
	Resolution	XGA 1024 x 768
	White Light Output	5,200 ANSI lumens
	Color Light Output	5,200 ANSI lumens
	Colors	16.7 million colors
	Aspect Ratio	Native 4:3, 16:9 and 16:10 compatible
	Contrast Ratio	16,000 : 1
Lens & Operation	Throw Ratio (distance : width)	1.4 - 2.3 : 1
	Focus Distance	31.5" - 551.2"
	Display Size	30" - 300"
	Lens	Manual zoom x 1.6, manual focus
	Lamp Wattage	280W
	Expected Lamp Life*	Approximately 4,500 hours (Standard mode) 6,000 hours (Eco mode)
	Expected Filter Life**	Approximately 10,000 hours
Compatibility	Speaker Output	16W
	Keystone	H and V: +/- 30°
	Computer	VGA, SVGA, XGA, WXGA/SXGA/SXGA+/HD/UXGA, MAC 16"
	H-Sync	15 kHz - 106 kHz
	V-Sync	50 Hz - 120 Hz
	Composite Video	NTSC, NTSC4.43, PAL, PAL-M, -N, SECAM
	Component Video	480i, 480p, 576i, 576p, 720p, 1080i, 1080p
Connectors	HDMI	480i, 480p, 576i, 576p, 720p, 1080i, 1080p Computer signal TMDS clock 25 MHz - 162 MHz
	MHL	480i, 480p, 576i, 576p, 720p, 1080i, 1080p Computer signals TMDS clock 25 MHz - 75 MHz
	Digital Input	HDMI x 1, HDMI/MHL x 1
	Computer Input 1	15-pin mini D-sub x 1
	Computer Input 2	15-pin mini D-sub x 1 (shared with monitor out)
	Computer Monitor Output	15-pin mini D-sub x 1 (shared with computer in 2)
	Video Input	
Ratings & Warranty	Composite Video	RCA jack x 1
	Component Video	15-pin mini D-sub x 1
	Audio Input	3.5 mm stereo mini jack x 2, RCA jack (L/R) x 1
	Audio Output	3.5 mm stereo mini jack x 1
	Network (LAN) Wired	RJ-45 port (10 base-T / 100 base-TX)
	Network (LAN) Wireless	USB-A, IEEE802.11 b/g/n - optional wireless adapter required
	USB	Type A x 2 (PC-less presentation, wireless network) Type B x 1 (Remote control mouse or PC screen display)
Ratings & Warranty	Control Terminals	9-pin D-sub x 1 (RS-232 control)
	Power Supply	AC 100-120V/220-240V, 50/60Hz
	Power Consumption	400W / 390W
	Operating Temperature	41°F - 95°F (5°C - 35°C)
	Dimensions (W x D x H)	16.0" x 12.3" x 4.3" (excluding protruding parts)
	Weight	Approximately 11.7 lbs.
	Approvals	UL 60950-1 / cUL FCC Part 15 subpart B class A
Warranty	3-year limited parts and labor Extended Service Contract available (additional cost)	

* Actual lamp life will vary by individual lamp and based on environmental conditions, selected operating mode, user settings and usage. Hours of average lamp life specified are not guaranteed and do not constitute part of the product or lamp warranty. Lamp brightness decreases over time.

** Actual filter life will vary by individual filter and based on environmental conditions, selected operating mode, user settings and usage. Hours of average filter life specified are not guaranteed and do not constitute part of the product warranty.



MX0677-03/19

All specifications subject to change without notice.

3LCD and the 3LCD logo are registered trademarks of the Seiko Epson Corporation.

iPad and iPhone are registered trademarks of Apple Inc., registered in the U.S. and other countries.

©2019 Maxell Corporation of America. All Rights Reserved.

Maxell Corporation of America

Toll Free: 1.800.377.5887

Web: www.maxellproav.com

